

# Read This before Using This Product

Microcomputer Tool Development Department 2,  
Tool Business Division  
Renesas Solutions Corp.

## Notes on Using the USB Driver Package for the 64-bit Edition of Windows 7

The USB Driver supplied with this mailing is WS software. Please carefully check the following notes before using this WS software.

### 1. Using This Product

- Because this product is under development, there is a possibility of faults, other than obvious faults, occurring.
- Technical support for the beta version USB driver will end after the release of the emulator software product compliant with the 64-bit edition of Windows 7.
- When the emulator software product compliant with the 64-bit edition of Windows 7 is released, please uninstall the beta version USB driver on your own responsibility, then download the emulator software from the Renesas web site and use it.

### 2. About This Product

This software is a USB driver package for operating your Renesas emulator on the 64-bit edition of Windows 7. Please see the tables below to confirm the USB driver package you want to install is compatible with your emulator. If you are using the E10A-USB emulator, both packages are necessary.

#### (1) E1usb.sys Package (For E1/E20, E100, E10A-USB, E30A)

|              |   |
|--------------|---|
| Product Name | USB Driver Package for the 64-bit Edition of Windows 7 (E1usb.sys)<br>(1) USB driver file<br>(2) Setup Information file<br>(3) Catalog file<br>(4) Driver Package Installer |
| Filename     | (1) E1usb.sys<br>(2) E1usb.inf<br>(3) E1usbamd64.cat<br>(4) DPInst.exe  |
| Emulator     | E1/E20<br>E100<br>E10A-USB<br>E30A  |

## (2) Hmseusb.sys Package (For E8a and E10A-USB)

|              |   |
|--------------|---|
| Product Name | USB Driver Package for the 64-bit Edition of Windows 7 (Hmseusb.sys)<br>(1)USB driver file(.sys)<br>(2)Setup Information file (.inf)<br>(3)Catalog file (.cat)<br>(4)Driver Package Installer(.exe) |
| Filename     | (1)Hmseusb.sys<br>(2)Hmseusb.inf<br>(3)Hmseusbamd64.cat<br>(4)DPInst.exe  |
| Emulator     | E8a<br>E10A-USB   |

## 3. Restrictions

## (1) About Supported OS

This software supports only the 64-bit edition of Windows 7. This software does not support the OS except the 64-bit edition of Windows 7.

## (2) About Supported Emulator

Please do not use this software in emulators other than the supported emulator. There is a possibility that your PC is terminated abnormally.

## (3) Notes on Using This Software

- a. This software is a package consisting of four files. Please do not change each state of the files (such as changing description, renaming and moving to another folder).
- b. When you install the USB driver, use an account with administrator privilege. This software does not support being installed by using an account without administrator privilege.
- c. When you install this software, please do not use the emulator software of the version that does not support Windows Vista. Your emulator will operate on the 64-bit edition of Windows 7 only when the emulator software is compatible with Windows Vista and after this USB driver is installed.

#### 4. How to Install

- (1) Install the Windows Vista-compliant emulator software.
- (2) Execute DPInst.exe of USB Driver Package that supports your emulator.
- (3) After the installation wizard starts, install the USB driver according to the following procedure.

- a. When the installation wizard starts, click [Next>]. (See Figure 4.1.)

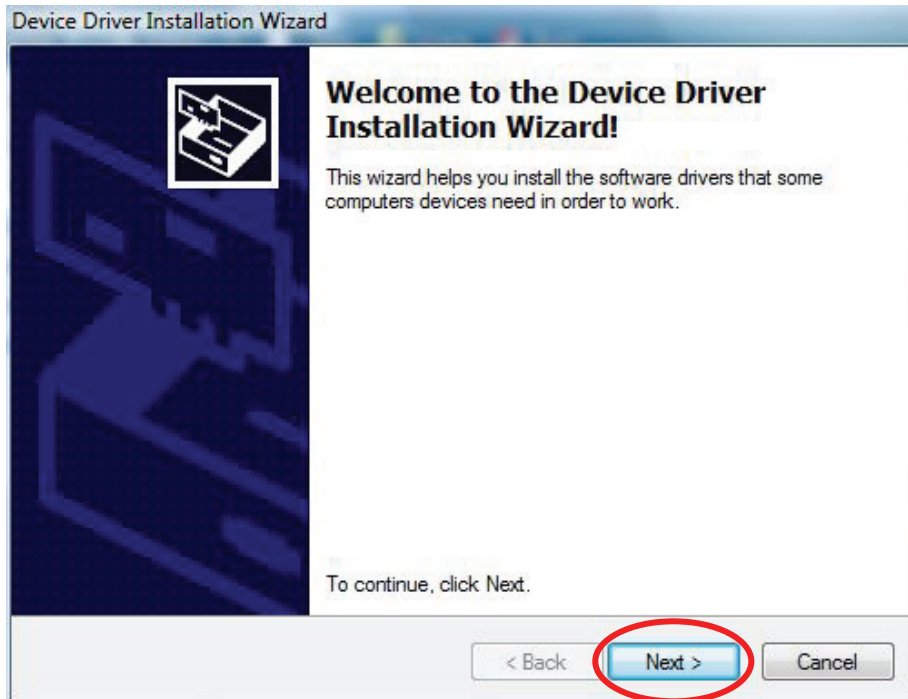


Figure 4.1 Starting of Installation Wizard

- b. Click [Install] in [Windows Security] dialog box. (See Figure 2)

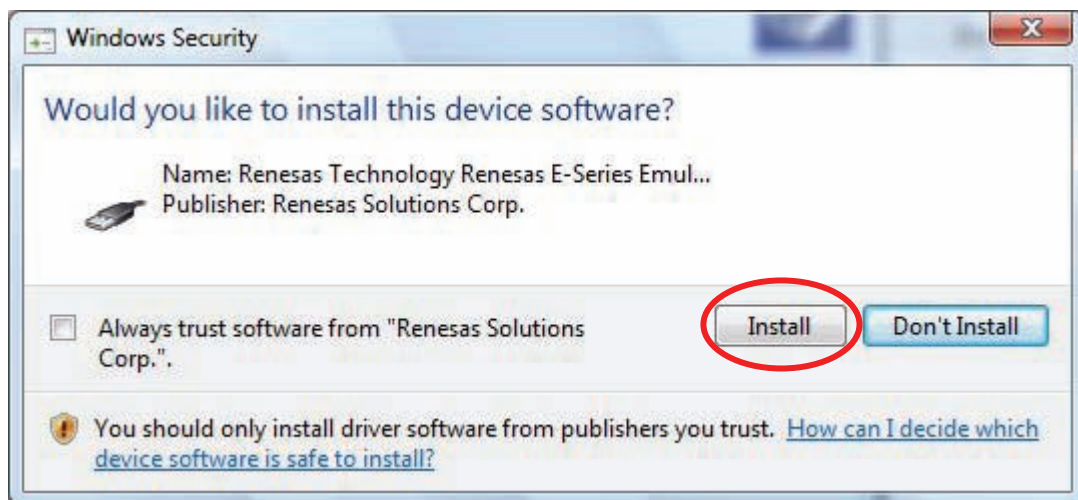


Figure 4.2 [Windows Security] Dialog Box

- c. When "The drivers were successfully installed on this computer." appears, end by clicking [Finish]. (See Figure 4.3)

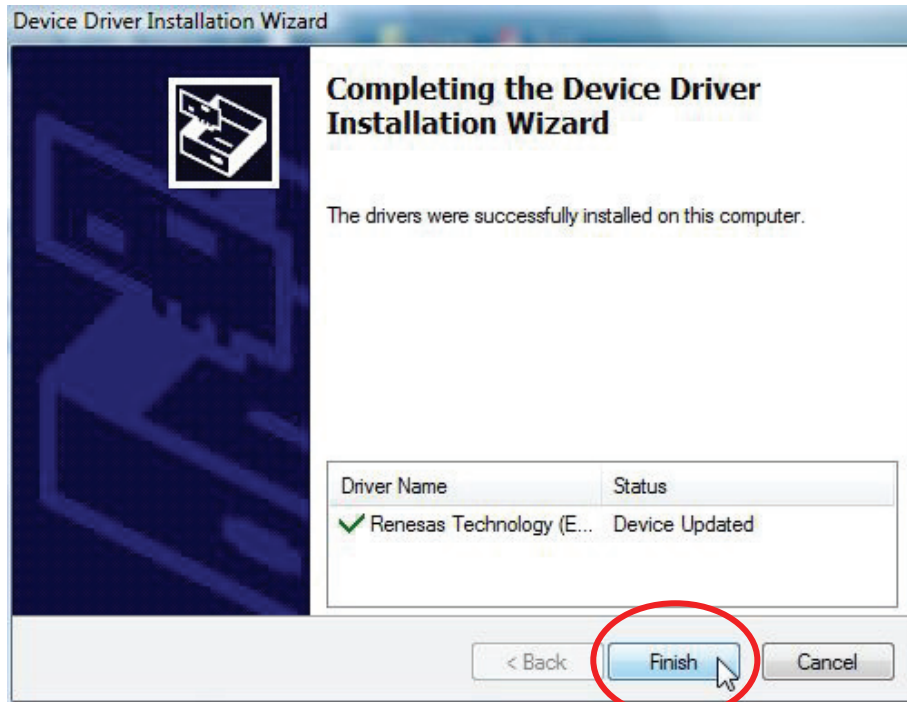


Figure 4.3 Completion of Installation Wizard

- d. When the installation wizard is finished, connect the emulator to the computer with the USB cable.
- e. After connecting, the following balloon will appear to show you the emulator was automatically installed successfully. (See Figure 4.4.)

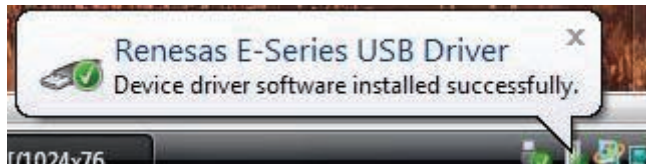


Figure 4.4 Completion of Emulator Installation

- f. You are now able to use the emulator on the 64-bit edition of Windows 7.